

PART OF THE NE.1/4, OF SECTION 23, T.1N., R.3W., S.L.B. & M.

# MY SUB

IN OGDEN CITY

TAXING UNIT: 24

SCALE 1" = 1:20'

## SECTION 15, T.6N., R.2W., S.L.B. & M.

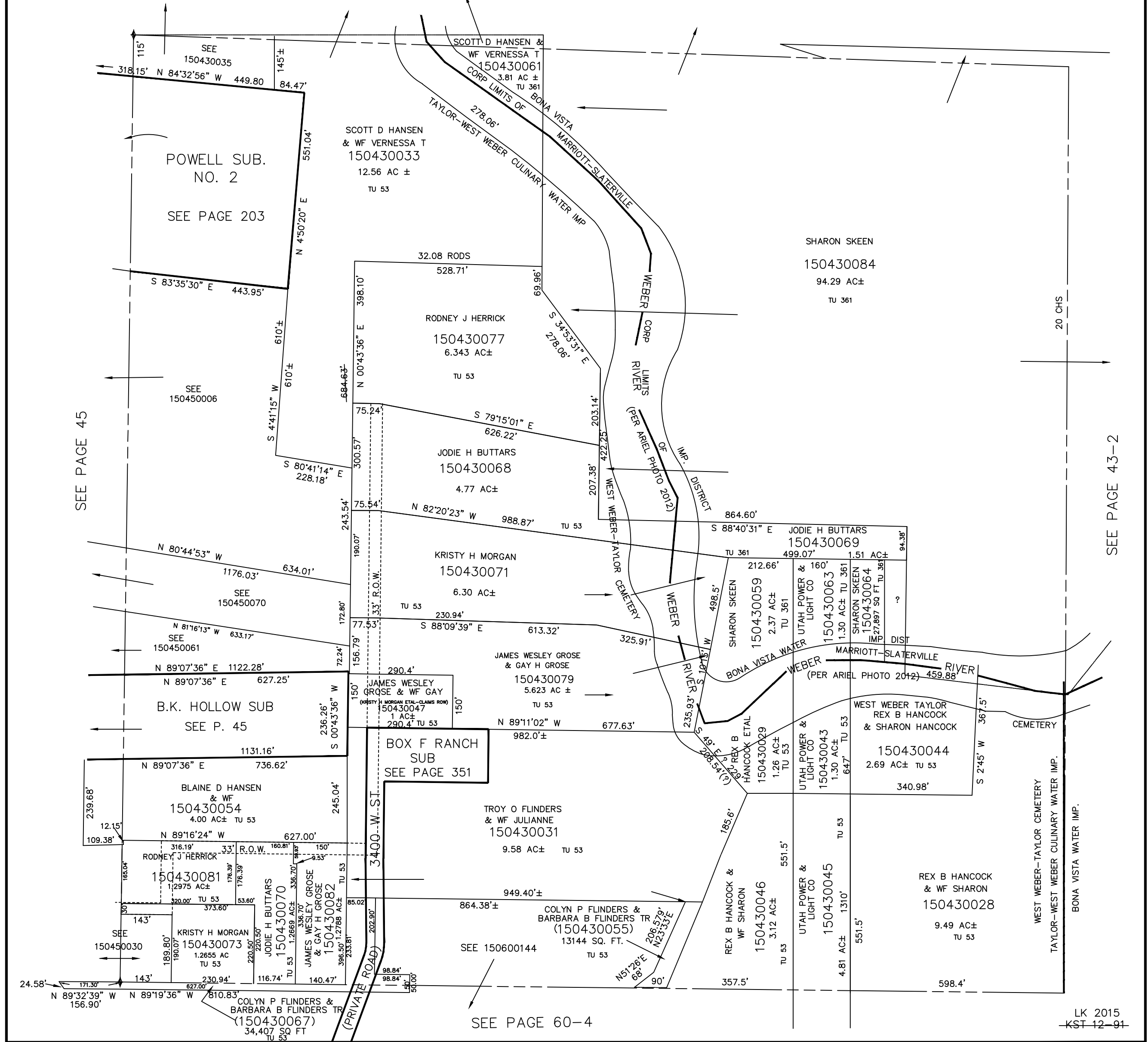
IN MARRIOTT-SLATERVILLE CITY & WEBER COUNTY

TAXING UNIT: 53, 361

SCALE 1" = 200'

SEE PAGE 43-4

SEE PAGE 789-3



SEE PAGE 45

SEE PAGE 43-2

SEE PAGE 60-4

LK 2015  
KST 12-91